



I-Spy - Summer



Tick the magnifying glass if you spot these signs of summer on your walk.



Green leaves



Flowers

To maintain our chalk flower meadows, we graze them with sheep and cattle - without this, they would eventually turn into woodland.



Ground ivy



Buttercup



Vetch



Clover



Turn over for more signs of summer

Insects

Insects use colour in two ways. Some use camouflage to blend in whilst others have bright warning colours to warn of a nasty taste or poison. Others have 'eyes' to frighten predators away.



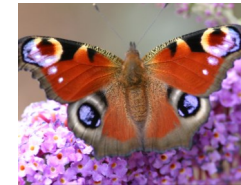
Woodlouse



Shield bug



Peacock butterfly



Ladybird



Nettles and their mimics

Nettles have stinging hairs on their leaves to stop animals from eating them. Look out for nettle 'mimics' with similar leaves but no sting - an adaptation against being eaten.



White dead nettle

Yellow archangel

If you have enjoyed this I-Spy, look out for more I-Spy challenges in autumn, winter and spring.

For children from age 4+ who are interested in wildlife and nature, Box Moor Rangers meet on the third Saturday of every month. Please call 01442 253300 or visit our website for further details: www.boxmoortrust.org.uk.