



# I-Spy - Summer



Tick the magnifying glass if you spot these signs of summer on your walk.



**Green leaves**



## Flowers

To maintain our chalk flower meadows, we graze them with sheep and cattle - without this, they would eventually turn into woodland.



**Ground ivy**



**Buttercup**



**Vetch**



**Clover**



Turn over for more signs of summer

## Insects

Insects use colour in two ways. Some use camouflage to blend in whilst others have bright warning colours to warn of a nasty taste or poison. Others have 'eyes' to frighten predators away.



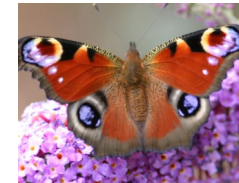
Woodlouse



Shield bug



Peacock butterfly



Ladybird



## Nettles and their mimics

Nettles have stinging hairs on their leaves to stop animals from eating them. Look out for nettle 'mimics' with similar leaves but no sting - an adaptation against being eaten.



White dead nettle



Yellow archangel

If you have enjoyed this I-Spy, look out for more I-Spy challenges in autumn, winter and spring.

For children from age 4+ who are interested in wildlife and nature, Box Moor Rangers meet on the third Saturday of the month. Please call 01442 253300 or visit our website for further details: [www.boxmoortrust.org.uk](http://www.boxmoortrust.org.uk).